

Radiance Tech Tip 6

Updating the Software

Introduction

The most current firmware update for the Radiance is shown at the top of the software update list on our website. You can check your firmware revision by looking at the Radiance Info Screen. To display the Info Screen, press "Menu, Info" or press the "Ok" button on your remote when the menu is not up. The update can be performed with a PC and a serial cable. See the "Update History" log for details on the firmware updates.

Equipment needed

1. Lumagen, Radiance, Video Processor
2. DB9-F to DB9-F null-modem serial cable
3. PC
4. Optional: USB to serial adapter for PCs without a serial port

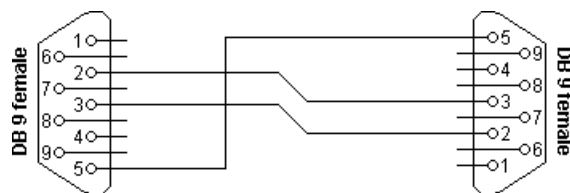
Computer requirements

- Windows® 95, 98, ME, 2000, XP or Vista
- RS232 (Serial) or USB connector

Serial cable requirements

- RS232 null-modem cable
- DB-9 RS232 female-to-female connectors (9-pin)





Connector 1	Connector 2	Function
2	3	Rx ← Tx
3	2	TX → Rx
5	5	Signal Ground

Making the connections

If the computer only has a USB connector, you will need to use a USB-to-serial port adapter to make the connection to the Radiance. An adapter isn't required if the computer has a RS232 connector. With or without an adapter, you will need to use a null-modem serial cable to connect the Radiance to the computer.

Most USB-to-serial port adapters should work. If you have trouble downloading new software to the Radiance, try searching for an updated driver for your USB-to-serial port adapter. Load the updated driver on your PC and try again.

Running the update

Download the firmware update and unzip the file. Connect your PC to your Radiance using a DB9-F-to-DB9-F null-modem serial cable. Insure that you have a stable power supply to the Radiance. There is a window of a few seconds at the end when the flash memory is programmed that if the power went out the Radiance might need to be reprogrammed at the factory. Don't update the firmware during a lightning storm!

1. Turn the Radiance power on.
2. On the PC double click (run) the download utility.
3. Choose the correct Com port.
4. Click "Start" when you are ready to begin the download.
5. The firmware update will start updating which can take a couple minutes. The PC utility will finish and tell you when it's done.
6. If the utility finishes with an error; just turn the Radiance off, then back on and rerun the download utility.

Using the bootloader to update firmware

If the firmware can't be updated using the normal procedure or the Radiance doesn't power up correctly, you can update the firmware using the bootloader. The bootloader allows you to download new firmware to a Radiance that has a software error that prevents the unit from booting up and operating normally. You have approximately 10 seconds for the update utility to connect to the bootloader after plugging in power to the Radiance.

1. Turn the Radiance power off by unplugging the AC power cord or unplugging the power cord from the back of the Radiance.
2. On the PC double click (run) the download utility.
3. Choose the correct Com port.
4. Plug in the Radiance power cord.
5. Within 10 seconds, click "Start" to begin the download.
6. The firmware update will start updating which can take a couple minutes. The PC utility will finish and tell you when it's done.
7. If the utility finishes with an error; just turn the Radiance off, then back on and rerun the download utility